

(:)

*

// : // :

(. . . .)

« » « »

.

.
.

(. . . .)

.

(Steiner, 2000)

:

(Erickson, 1994)

(

(Ndubisi, 2002)

.

(
 .()
 « » « »
 « » « » (CEA, 2007)

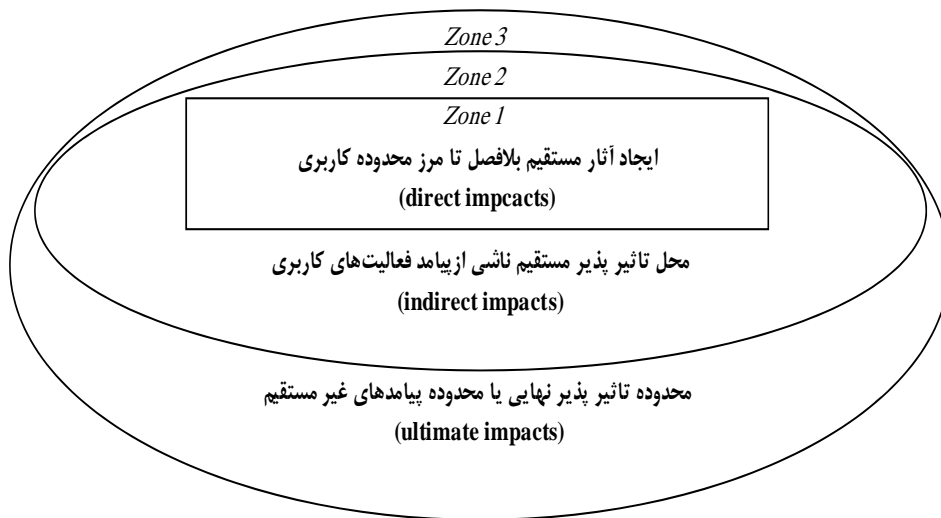
 « »

Schindler 1976; Culhane 1987;)

(Buckley, 1991

(Bruce, 2006; Pischke and Cashmore, 2006)

»
 « » «
 (Canter, « »
 .1996)



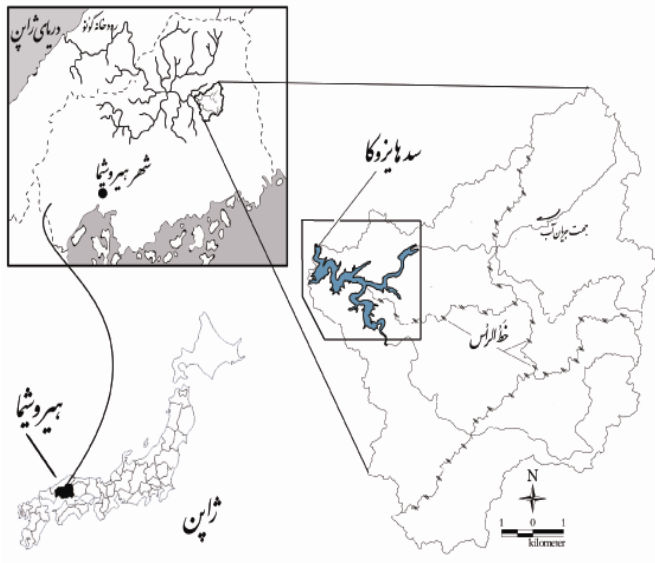
: ()
 (Freeman, March, and Spensley, 1992; mentioned in Canter, 1996)

« »

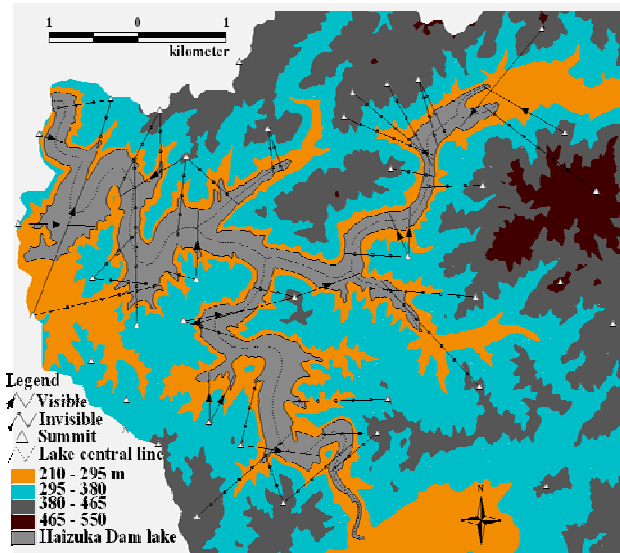
(Pischke and

Cashmore, 2006)

.....)



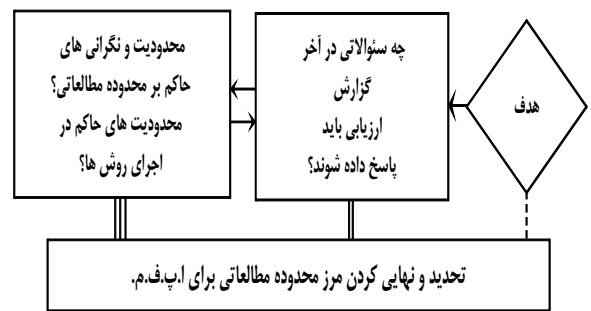
:()



:()

(Azari Dehkordi and Nakagoshi, 2004)

()



:()

.()

.()

)
ArcView

(
3D

3.3

(ZVI)

(Azari Dehkordi and

.Nakagoshi, 2004)

()

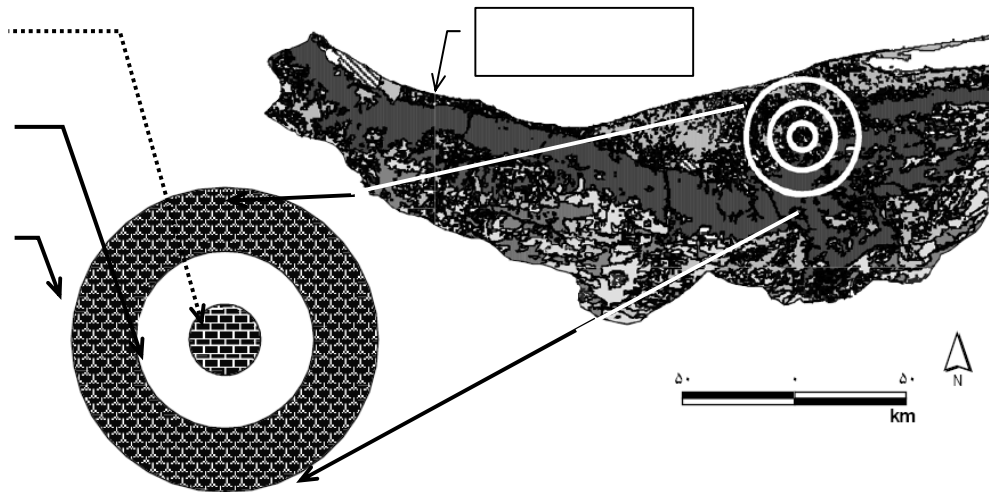
()

()

()

(ha) : ()

| | | | | | | | | | |
|---|--|--|--|--|--|--|--|--|--|
| | | | | | | | | | |
| | | | | | | | | | |
| | | | | | | | | | |
| / | | | | | | | | | |
| | | | | | | | | | |
| | | | | | | | | | |



()

()

.....)

()

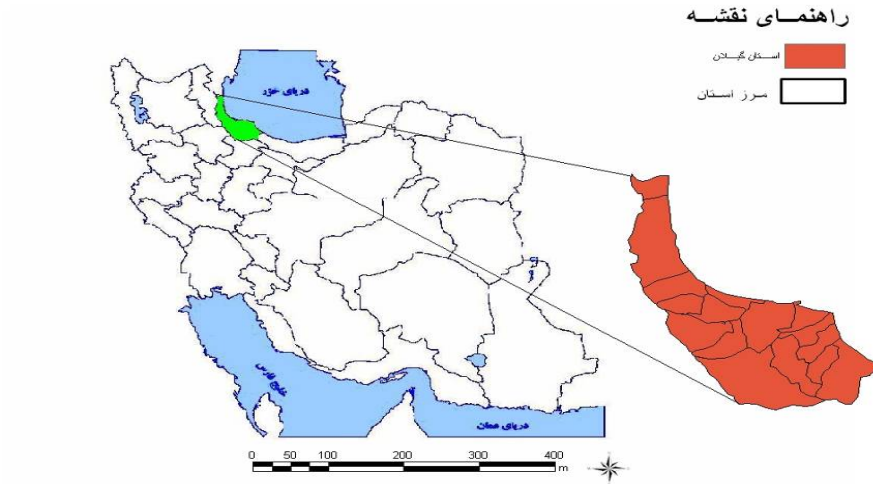
()

()

IRS

LissIII

TM



() : ()

() : ()

() ()

| R2 | | R2 | | R2 | |
|----|--|----|--|----|--|
| / | | / | | / | |
| / | | / | | / | |
| / | | / | | / | |
| / | | / | | / | |
| / | | / | | / | |

()

() Farina

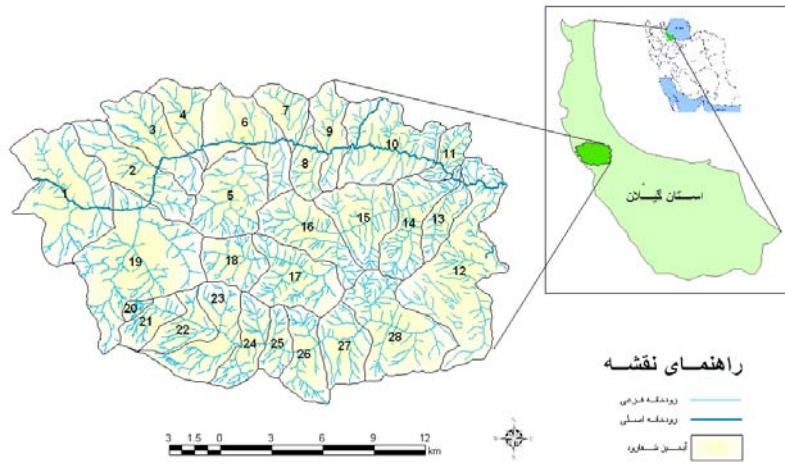
() ()

(Canter, 1996)

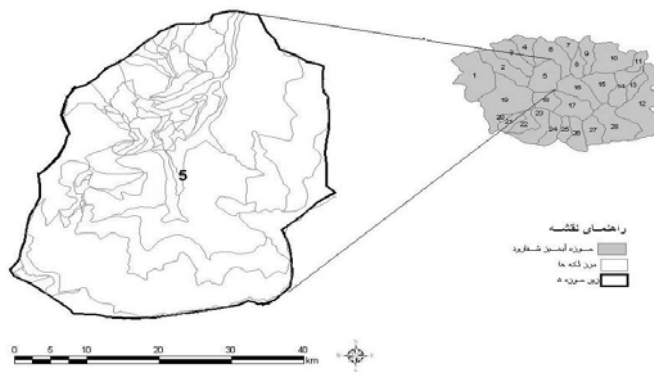
() Strahler

()

()



()



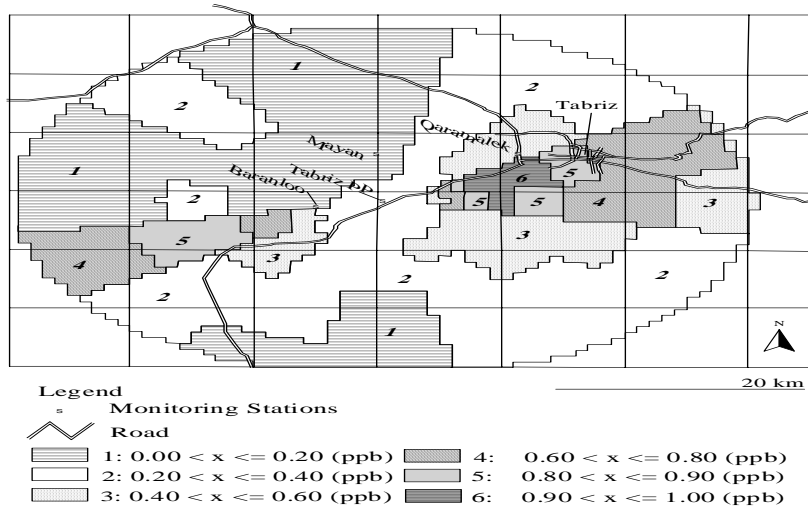
()

Geping, 1987)

I)

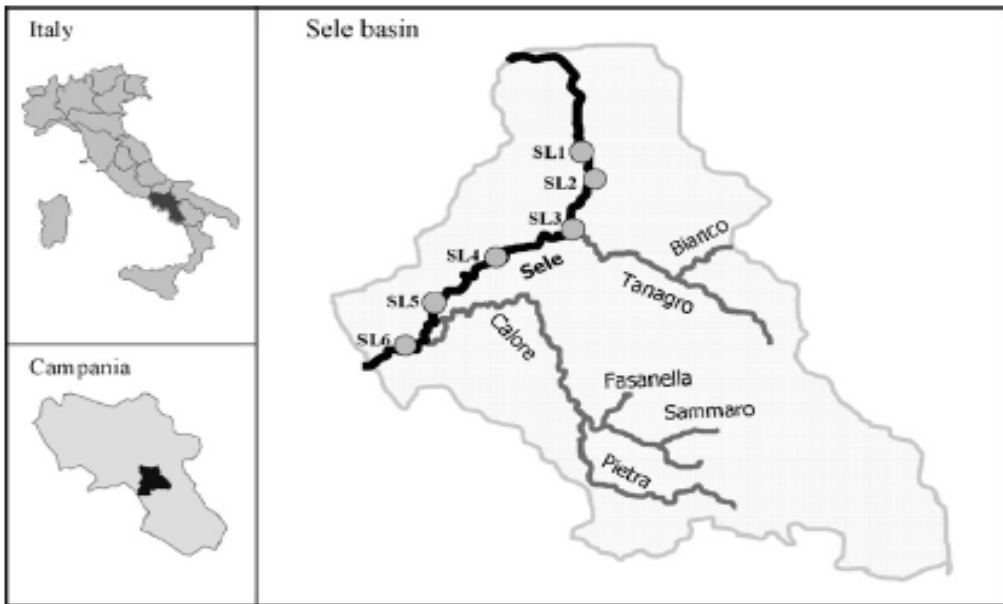
(VI

(Biswas and



(JICA, 1999)

SO₂ : ()



(Sele)

: ()

()

()

- 1-Evaluation
- 2-Direct
- 3-Indirect
- 4-Ultimate
- 5-Standard of living
- 6-Source
- 7-Sink
- 8-Decision-oriented theory
- 9-Problem oriented
- 10-Boundary
- 11-Significant impacts
- 12-Zone of Visual Influence
- 13-Zones
- 14-Grids
- 15-Forest fragmentation
- 16-Patches
- 17-Responsible authority
- 18-Valued ecosystem components
- 19-Objective-oriented

.....)

Azari Dehkordi, F. and N. , Nakagoshi .2004. Impact evaluation of Haizuka Dam on its upstream; A case study in Hiroshima Prefecture, Japan. *Chinese Geographical Science* 14 (4): 350-354.

Biswas, A.K. and Q. , Geping (eds) .1987. *Environmental impact assessment for developing countries*. London: For the United Nations University, by TYCOOLY INTERNATIONAL 232 pp.

Bruce, C. 2006. Can contingent evaluation resolve the "adding-up problem" in environmental impact assessment? *EIA Review* 26:570-585.

Buckley, R.C. 1991. How accurate are environmental impact predictions? *Ambio* 20:161-162.

Canter, L. W. 1996. *Environmental impact assessment*. New York: Mc Graw- Hill 660pp
CEA (Canadian Environmental Assessment) 2007. The process for defining the spatial boundary of a study area during an environmental assessment of offshore exploratory drilling projects. Retrieved 2007-04-29 from www.ceaa-acee.gc.ca/013/0002/drilling_ops_e.

Culhane, P.J. 1987. The precision and accuracy of US environmental impact statements. *Environmental Monitoring and Assessment* 8:217-238.

Gergel, S.E. and M. G. , Turner. 2002. *Learning landscape ecology: A practical guide to concepts and techniques*. New York: Springer 316pp.

Erickson, P.A. 1994. *A Practical guide to environmental impact assessment*. San Diego: Academic Press Inc. 266 pp.

Farina, A. 2006. *Principle and methods in landscape ecology: Toward a science of landscape* 2nd ed. Dordrecht: Springer 412 pp.

Freeman, L.R., F. , March and J.W. , Spensley .1992. NEPA Compliance Manual Government Institute, Rockville, Md., PP. 66-67, 104-107 (cited in Canter, 1996).

JICA .1999. The study on evaluation of environmental impact assessment of thermal power plants in Islamic Republic of Iran (Final Report). Tokyo: Japan International Cooperation Agency, Tokyo Electric Power Environmental Engineering Co. Inc.

Naddeo, V., T. , Zarra, and V. , Belgiomo .2007. Optimization of sampling frequency for river water quality assessment according to Italian implementation of the EU Water Framework Directive. *Environmental Science & Policy* 10:243-249.

Ndubisi, F. 2002. *Ecological planning: A historical and comparative synthesis*. Baltimore: The Johns Hopkins University Press 287 pp.

Pischke, F. and M., Cashmere. 2006. Decision-oriented environmental assessment: An empirical study of its theory and methods. *EIA Review* 26:643-662

Schindler, D.W. 1976. The impact statement boondoggle. *Science* 152:509.

Steiner, F. 2000. *The living landscape: An ecological approach to landscape planning*. New York: McGraw-Hill 477 pp.

Strahler, A.N. 1964. Quantitative geomorphology of drainage basin and channel networks, section 4-11. In V.T. Chow (Editor), *Handbook of Applied Hydrology*. McGraw Hill, New York.