

( : )

\*

// : // :

EIA<sup>1</sup>

EIA

( )

/

EIA -

)

.(

(Frederickson, Berkoff and Barber, 1993)

.( )

---

( )

(Canter, 1996)

این

,

(

.)

)

.)

(EIA)

) EIA

.)

( )

( )

Capoeta capoeta

,

Nemacheilus persa

.)

...

EIA ) .(

(Canter, 1996) /

EIA / ( )

(Partidario, .2003) )

GIS<sup>4</sup> RS<sup>3</sup> /

(Lane, Richards, and Chandler. , /

1998, Demers, 2005. Kanevski and Maignan, 2004) .( )

(Us Army Corp of

.Engineers/HEC, 1999)

Landsat

ETM+ (Lillesand and Kiefer, 2004)

Pan

.(Vanoni, 1975)

ETM+2002

( )

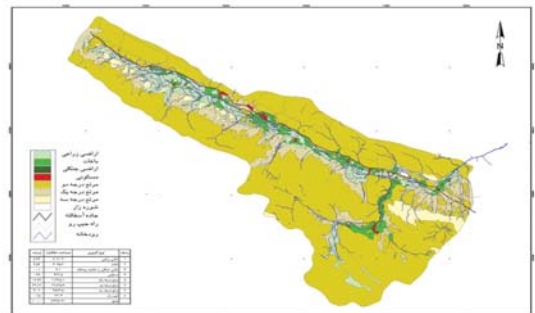
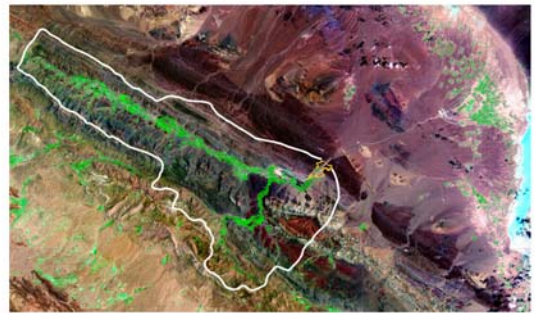
Ilwis Geomatica

(Foody and Atkinson. 002, ArcGIS Arcinfo Arcview

Lillesand and Kiefer. 2004, Claude, Colette and Girard. 2003)

GIS RS

.(Michael, 1991)



+

:( )

---

(Thomann, and

.Muller, 1987)

( )

(Us Army ( )

.Corp of Engineers/HEC, 1999)

EIA

:( )

( )						

( )  
EIA

$$V_s = A_0(H - h_0) + V_0$$

.(Vanoni, 1975)

.( ) =  $V_s$   
=  $A_0$

.( ) =  $V_0$   
.( ) =  $H$   
=  $h_0$

...

/ . /

( )

(US Environmental Protection Agency, 2000)

(Carlson, 1977)

TSI

(Orlob,

$$N_f = 320 \frac{L \times Q}{H \times V} \quad (1983)$$

:

:( )

$$\text{TSI(TN)} = \frac{1}{A} \ln(\text{TN}) + \frac{1}{B} \quad (\text{mg/Lit})$$

$$= N_f \quad )$$

$$= Q \quad ( )$$

$$= L$$

:( )

$$\text{TSI(TP)} = \frac{1}{A} \ln(\text{TP}) + \frac{1}{B} \quad (\mu\text{g/Lit})$$

$$= V \quad ( )$$

$$= H \quad ( )$$

$$. \quad ( )$$

( )

( ) Orlob

×

$N_f$

(US Environmental Protection Agency, 2000)

:( )

(TSI)	mg/Lit	mg/Lit	
<	<	<	Eutrophic
<	<	<	Mesotrophic
<	<	<	Oligotrophic

(US Environmental Protection Agency, 2000)

:( )

	$N_f \leq \frac{1}{2\pi}$	
	$N_f \cong \frac{1}{2\pi}$	
	$N_f \geq \frac{1}{2\pi}$	

(Orlob, 1983)

( )

(Chapra, 1997)

V

Q

$$t_w = \frac{V}{Q}$$

/

/ /



...

)  
) ( ( ( )

( )

/

/

:( )

EIA

(Canter, 1996)

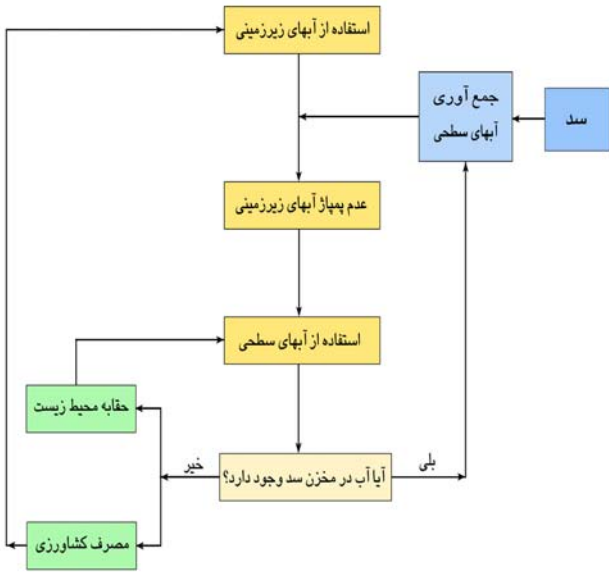
		/	/
		/	/
		/	/
		/	/
		/	/
		/	/
		/	/
		/	/
		/	/
		/	/

( )

( )

( )

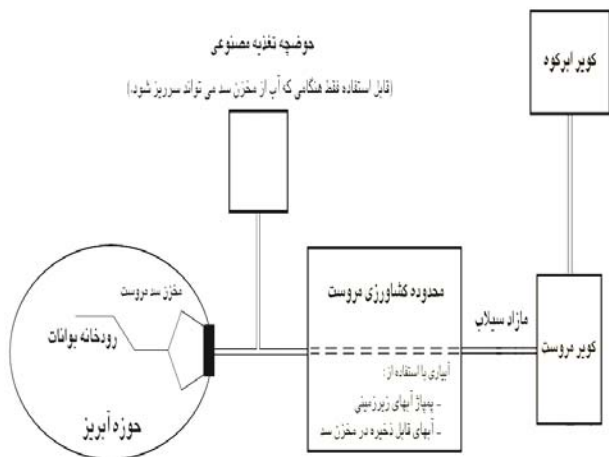
( )



( )

( )

( )



( )

( )

<p style="text-align: center;">/</p> <p style="text-align: center;">/</p> <p style="text-align: center;">/</p> $\left( \frac{1}{100} * \frac{1}{100} + \frac{1}{100} * \frac{1}{100} \right) / \left( \frac{1}{100} \right) =$ $\frac{1}{100} * \frac{1}{100} = \frac{1}{100} \%$ $\frac{1}{100} / \frac{1}{100} = \frac{1}{100} \%$	
---	--



...

/

$$/ - / = / \text{ m/y} \quad /$$

/

/

این

%

/

:

%

:

$$* \% = / \text{ m}$$

/ :

.( )

% :

%

: / m

$$(\text{m}^2)^* / * \Delta h = \text{m}^3/\text{y}$$

$$\Delta h = / \text{ m}$$

•

/

/

/

•

$$/ - / = / \text{ m/y}$$

•

---

بی یقین

### یادداشت‌ها

- 1-Environmental Impact Assessment
- 2-Cusmo politan
- 3-Remote Sensing
- 4-Geographical Information System
- 5-Format Transformation
- 6-Geometric Transformation
- 7-Transformation between Map Projections
- 8-Attribute Query Function
- 9-Statistical Analysis
- 10-Retrieval/Classification and Measurement Functions
- 11-Topographic Functions
- 12- Area Reduction Method
- 13- Trophic State Index
- 14-Storage Coefficient

...

- 
- Canter, L. W. 1996. Environmental Impact Assessment, Mc Grew Hill Book Co, Baltimore, 660 p.
- Carlson, R. E. 1977. A Trophic State Index For Lakes.
- Chapra, S. C. 1997. Surface Water Quality Modeling, McGraw-Hill, 844 p.
- Claude, M., Colette, G., and Girard, M. 2003. Processing of Remote Sensing Data, Oxford & IBH Publishing Co.P.VT.LTD, 508 p.
- David, H.F.L., Bela, G.L.and, Paul, A.B. 1996. Environmental Engineers Handbook, Lewis Publishers, 1431 p.
- Davis, R., and Hirji, R. 2005. Water Resources and Environment, The word Bank, Washington DC., 28 p.
- Demers, M. N. 2005. Fundamental of Geographic Information Systems, John Wiley & Sons: Third Edition, 321 p.
- Frederickson, H. D., Berkoff, J., and Barber, W. 1993. Water resources management in Asia. World Bank Technical Paper No. 212, Vol. 1, The word Bank, Washington DC.
- Foody, G M., Atkinson, P. M. 2002. Uncertainty in Remote Sensing and GIS, John Wiley & Sons, 326p.
- Kanevski, M., Maignan, M. 2004. Analysis and Modeling of Spatial Environmental Data, EPFL Press, 276 p.
- Lane, S., Richards, K., and Chandler, J. 1998. Landform Monitoring, Modeling and Analysis, John Wiley & Sons, 454 p.
- Lillesand, T.M, R. Kiefer, J.W. 2004. Remote Sensing and Image interpretation, John Wiley & Sons, 724 p.
- Michael H. 1991. GIS Applications in Natural Resources, Art Shotreid.

---

Orlob, G. T. 1983. Mathematical Modeling Of Water Streams, Lakes and Reservoirs, Willey Interscience, 518 p.

Partidario, M. R. 2003. Strategic Environmental Assessment, Course Manual, Lisbon, Portugal, 71 p.

Thomann, R.V., and Muller, J.A. 1987. Principle of Surface Water Quality Modeling and Control, Harper and Row, 644 p.

US Army Corp of Engineers/HEC. 1999. Flood frequency Analysis.

US Environmental Protection Agency.2000. Nutrient Criteria Technical guidance Manual for Lakes and Reservoirs, EPA-822-B-00-001.

Vanoni, V. 1975. Sedimentation Engineering, ASCE Manual 54, ASCE, New York.