

COD

*

تاریخ دریافت: ۸۵/۱۰/۱۹ تاریخ پذیرش: / /

pH COD COD
COD / COD
% % g/lit
% سیلئ pH = سیلئ COD
% COD gr/lit pH = gr/lit COD
COD COD
تهبه SEM این همچنین
COD

این

)

(

()

pH

pH - این

,COD

COD

یا

.(Wayne ,1999)

.(Banat, 2000)

(Zn)

()

() : ()

° c

/ /

()

/ ± /	/ ± /	/ ± /	(m3/d) pH COD (mg/lit) TS (mg/lit) COD/BOD5
/ -	/ /	/	

COD

:()

()

(mm)	(g/cm3)	(%)	
/ /			
/ /	/	/	

يا .

/

/

pH .

/

pH

COD

/

pH

Suda-Fabric

Badische Aniline (PEI)

()

pH

() Noda

(HE)

()

Mitsui Cyanamid (PAM)

()

pH

()

()

()

COD TS

COD

COD

COD

COD ()

COD

COD

اين .

()

TS

)

% %

TS

()

(/ g/lit



pH

:()

) (

)

(

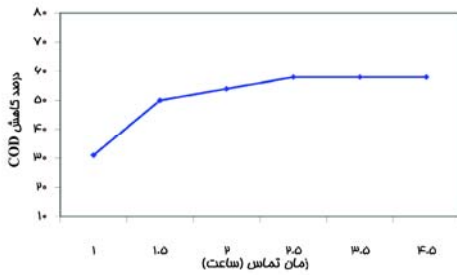
rpm

COD

/
()

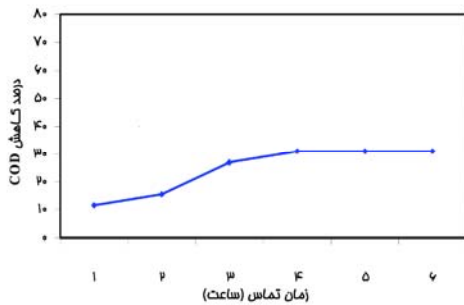
()

COD



: ()

pH=



: ()

pH=

COD

pH

COD

COD

این

/ / /)

pH

()

/ gr/lit

(pH =

COD

CC

/ gr

/

pH

COD

(/

pH=)

چشمگیری

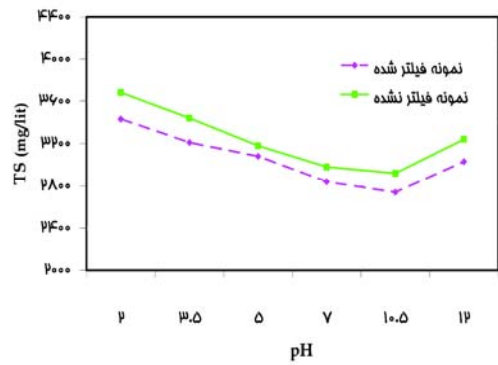
COD

pH

COD

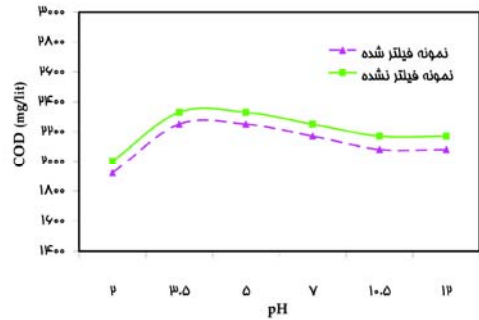
()

pH



TS : ()

pH

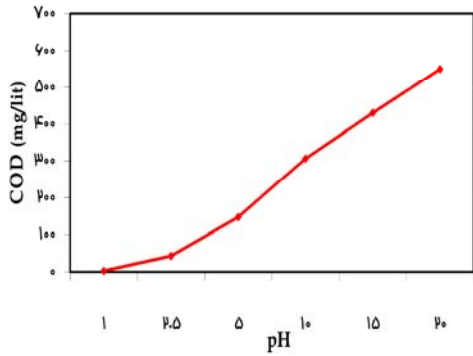


COD : ()

pH

COD

COD



pH = $\frac{COD}{pH}$

()

pH = $\frac{COD}{pH}$

pH

COD

pH

pH

pH

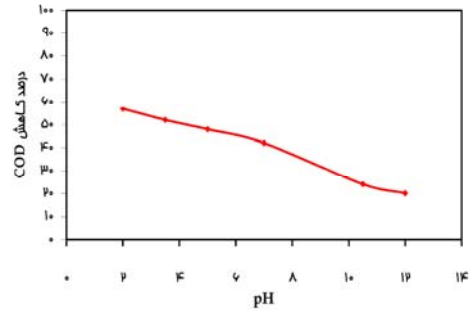
pH = $\frac{COD}{pH}$

: ()

()

COD

()



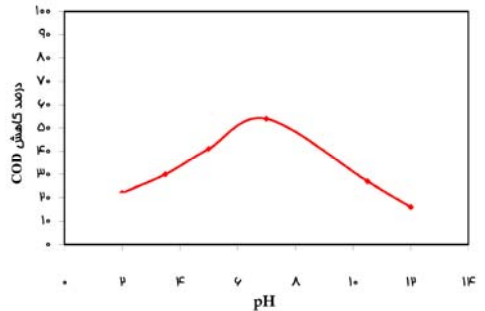
COD : ()

()

pH

افزایش

()



COD : ()

()

pH

()

COD

%

COD

COD

COD

/

%

g/lit

%

COD

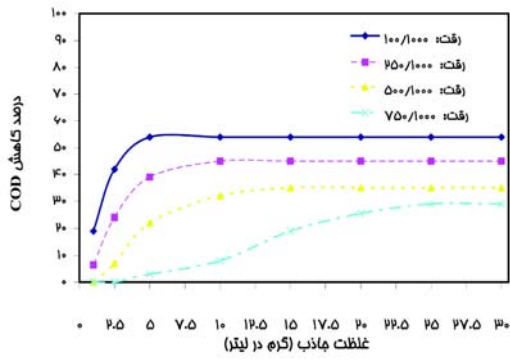
COD

()

COD

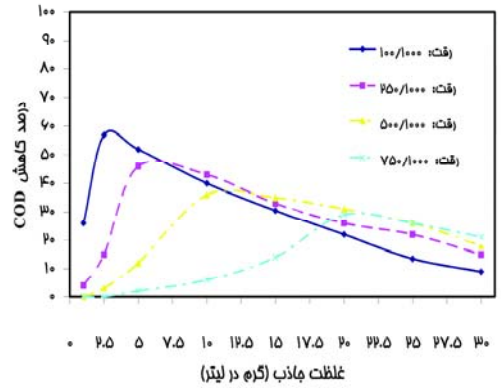
COD

COD



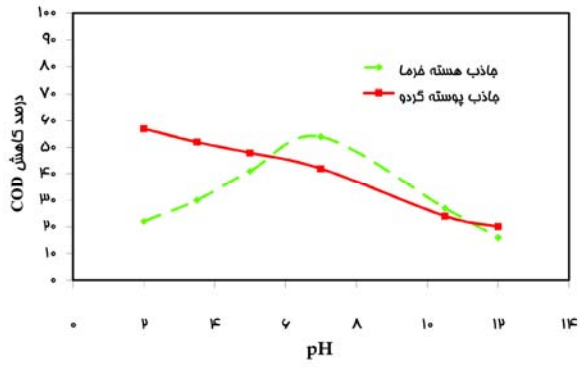
COD : ()

()



COD : ()

()



COD : ()

()

COD gr/lit
pH= %

%

این

pH COD pH / ()

pH

COD pH =
% gr/lit

pH COD ()

%

) pH () pH= COD

() ()

COD

COD g/lit

%

این COD

شایان

این COD

COD

COD

()

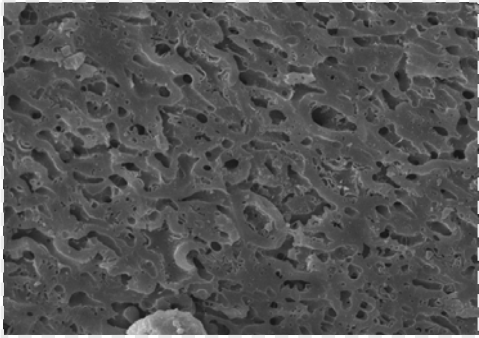
COD

%

% COD

COD

COD



: ()

() pH=

()

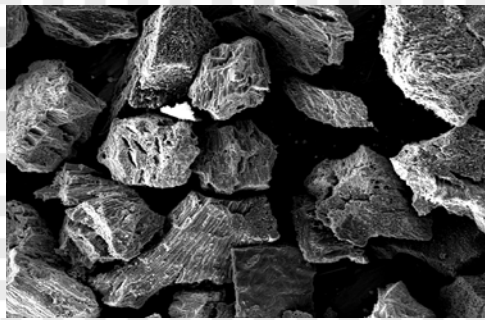
()

pH=

pH=

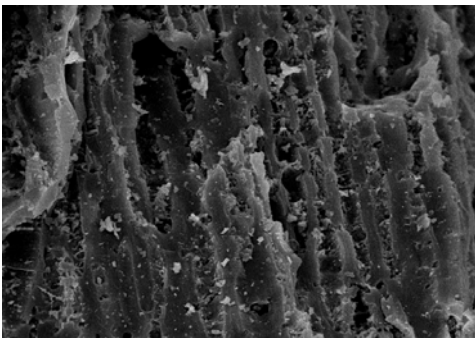
این

()



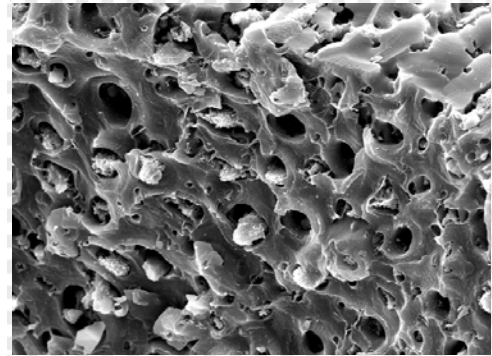
: ()

() ()



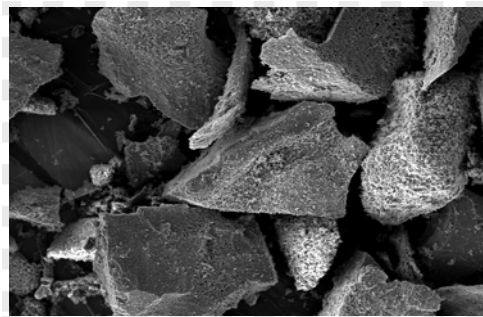
: ()

() ()



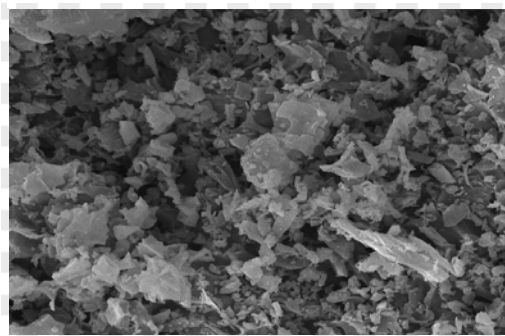
: ()

() ()



: ()

() ()

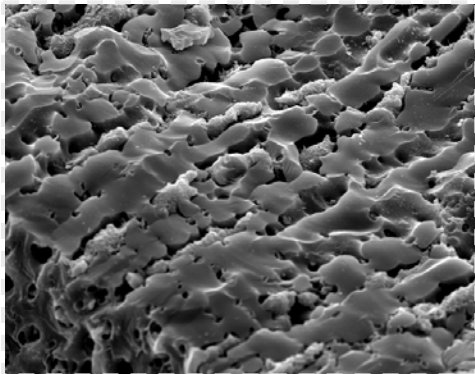


: ()

() () pH=

()

COD



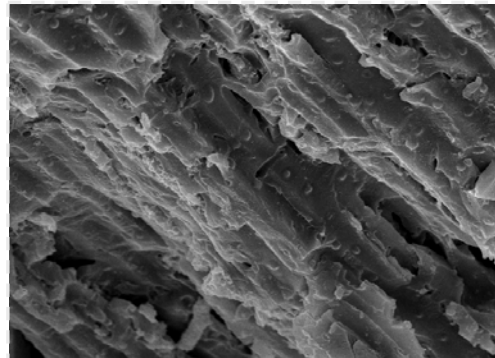
pH ()

()

pH=

pH=

()
) () pH=
(



: ()

) () pH=

(

یادداشتها

- 1- Wood Fiber Wastewater
- 2- Mesh
- 3- Jar Test
- 4- Spectrophotometer
- 5- Scanning Electron Microscopy

SBR

COD

COD

Wayne, E. M., H. Lynda. 1999. Activated Carbons in a Nutshell, USDA-ARS Commodity Utilization Research Unit, Southern, Regional Research Center, Agricultural Research/September 1999.