

COD

*

تاریخ دریافت: ۸۵/۱۰/۱۹ تاریخ پذیرش: / /

pH COD COD
COD / COD
% % g/lit
% سیلئ pH = سیلئ COD
% COD gr/lit pH = gr/lit COD
COD COD
تہیہ SEM ین COD
COD

COD

این

)

(

()

pH

pH - این

,COD

COD

یا

.(Wayne ,1999)

.(Banat, 2000)

(Zn)

()

() : ()

° c

/ /

()

/ ± /	/ ± /	/ ± /	(m3/d) pH COD (mg/lit)
/ -	/ /	/	TS (mg/lit) COD/BOD5

COD

:()

()

(mm)	(g/cm3)	(%)	
/ /			
/ /	/	/	

يا .

/

/

pH .

/

pH

COD

/

pH

Suda-Fabric

Badische Aniline (PEI)

()

pH

() Noda

(HE)

()

Mitsui Cyanamid

(PAM)

()

pH

()

()

()

COD TS

COD

COD

COD

COD ()

COD

COD

اين .

()

TS

)

% %

TS

()

(/ g/lit



pH

:()

) (

)

(

rpm

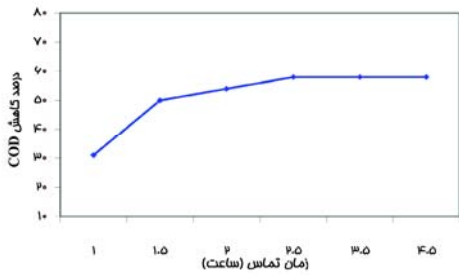
COD

/

()

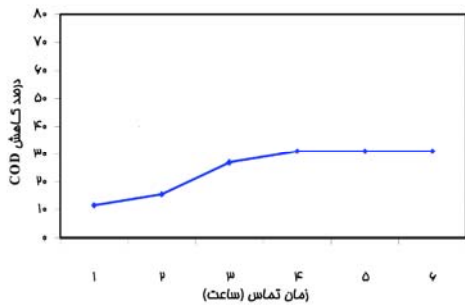
()

COD



: ()

pH=



: ()

pH=

COD

pH

COD

/

/ / /)

pH

/ gr/lit

(pH =

()

CC

/ gr

COD

/

pH

COD

(/

pH=)

چشمگیری

COD

pH

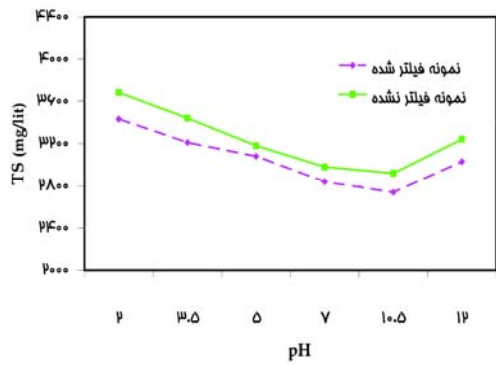
COD

()

/

/

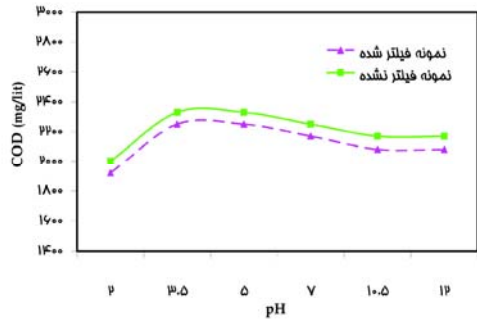
pH



TS : ()

pH

()



COD : ()

pH

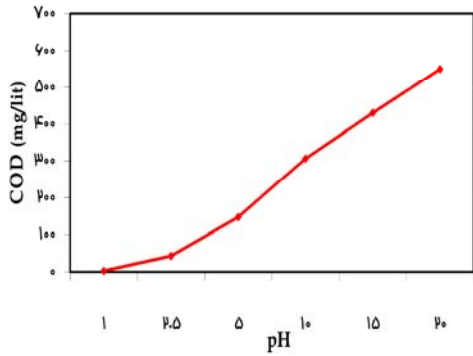
()

COD

COD

این

COD



pH =

pH COD

()

pH =

pH COD

pH

COD pH

pH .

pH

pH COD

pH=

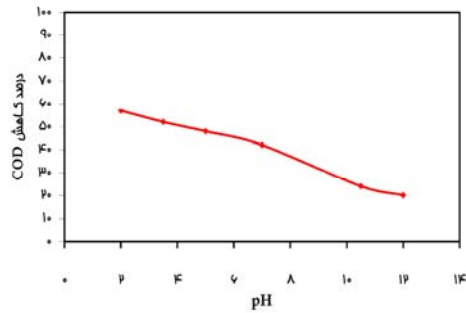
: ()

()] COD

()

COD

COD



COD : ()

() pH

افزایش

()

COD

()

COD

COD

%

/

COD

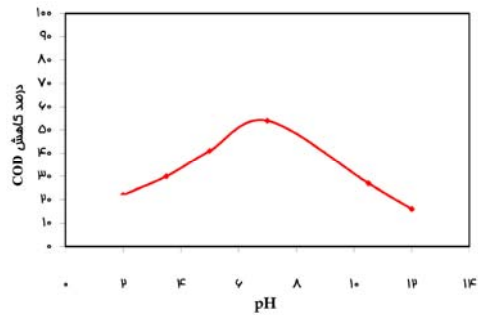
/

%

COD

g/lit

%



COD : ()

() pH

COD

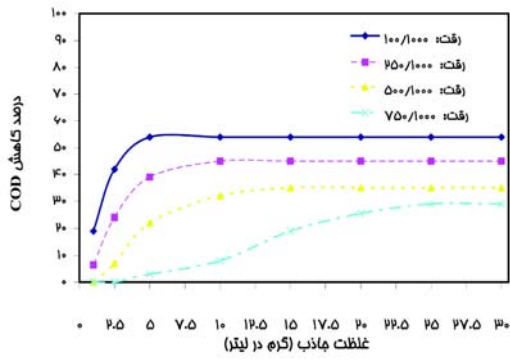
COD

()

COD

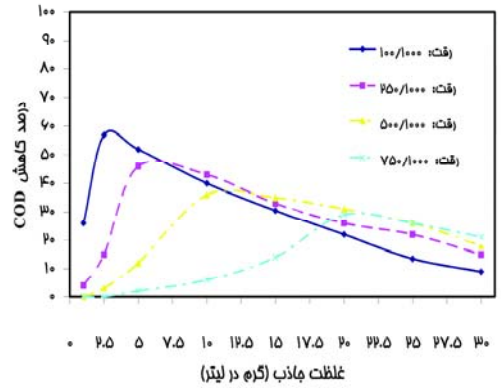
COD

COD



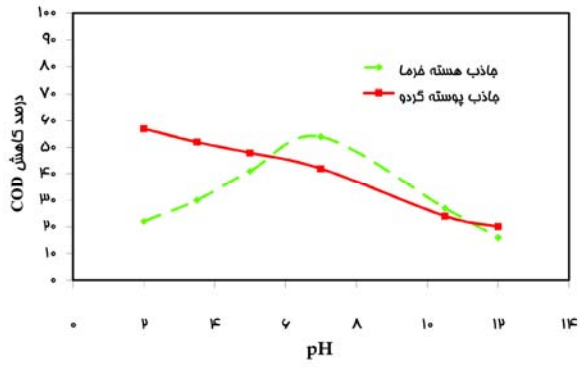
COD : ()

()



COD : ()

()



COD : ()

()

COD gr/lit
pH= %

%

این

pH COD pH /

pH

COD pH =
% gr/lit

pH COD ()

%

) pH ()

() ()

COD

COD

g/lit

%

این

COD

شایان

این

COD

COD

COD

()

COD

%

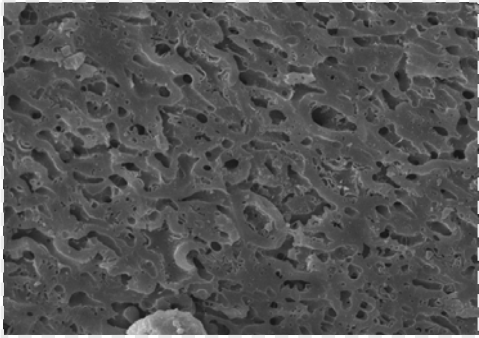
%

COD

pH

COD

COD



: ()

() pH=

()

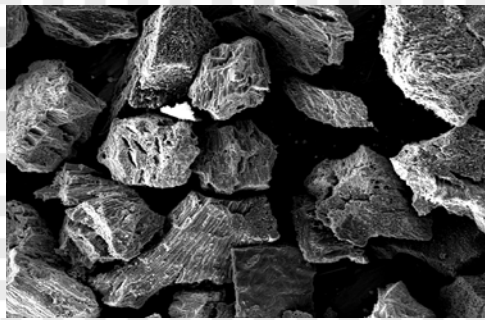
()

pH=

pH=

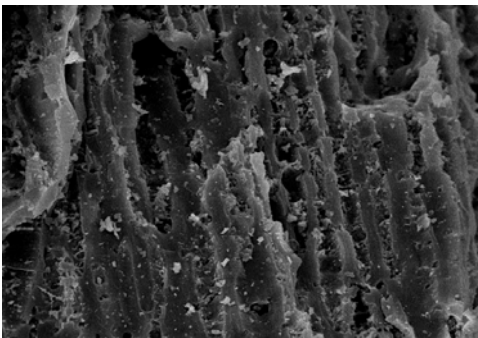
این

()



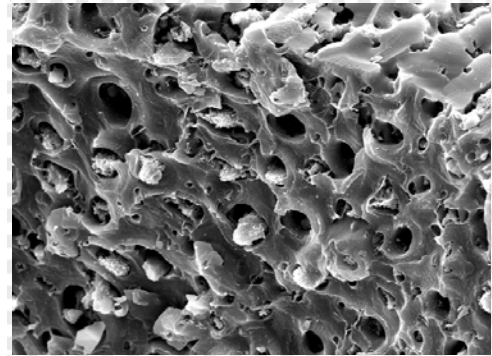
: ()

() ()



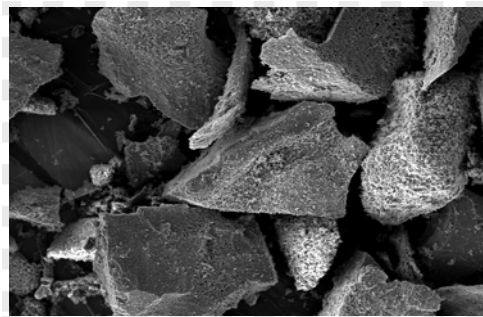
: ()

() ()



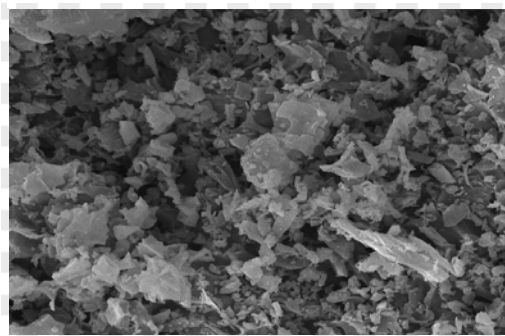
: ()

() ()



: ()

() ()

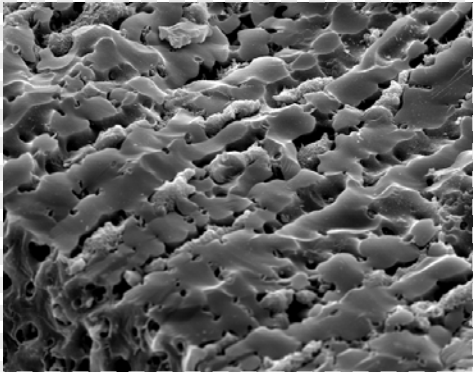


: ()

() () pH=

()

COD



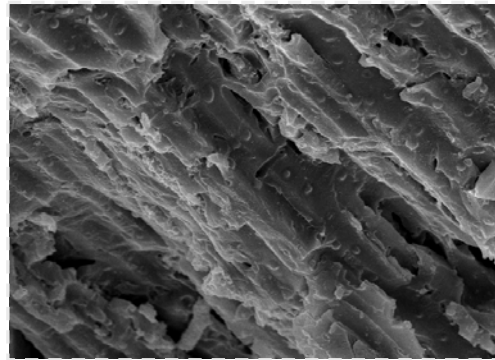
pH ()

()

pH=

pH=

()
) () pH=
(



: ()

) () pH=

(

یادداشت‌ها

- 1- Wood Fiber Wastewater
- 2- Mesh
- 3- Jar Test
- 4- Spectrophotometer
- 5- Scanning Electron Microscopy

SBR

COD

COD

Wayne, E. M., H. Lynda. 1999. Activated Carbons in a Nutshell, USDA-ARS Commodity Utilization Research Unit, Southern, Regional Research Center, Agricultural Research/September 1999.