

\*

/// : /// :

) ( ) ( (NPK)  
pH

پید یرش لید

(Lund,2001)

( )

)

(

(NPK)<sup>2</sup>

%

NPK

« »

(Diaz et al,1993)

NPK

( )

/ /

( )

/ /

(Diaz et al,1993)

بی

: C:N

(C:N)

( )

(MSW)<sup>1</sup>

بی

بی

( : ) C:N

« »

NPK

یا

( / / )

( )

« »

NPK

(World Bank, 1974)

« »

FAO

C:N

« »

) NPK

(

کیفیت

(Lasaridi, et al., 2005)

( )

NPK

NPK

سیلہ

بی

EC

)

.( pH

نیروی )

.(

)

.(

بی

A<sup>+</sup>

)

% )

(

(

)

)

یا .(

(

MSW

( $\mu\text{s/cm}$ )

(GI)<sup>4</sup>

%

گیری EC

یا

( ) بین

:( )

(Veeken et al, 2005)

Pythium ultimum

%

P.ultimum

(mg/kg)				
				(+A )

MSW

%

:(OM)<sup>3</sup>

: pH

MSW

(Lima et al, 2004)

(SC)<sup>5</sup>

$\mu\text{s/cm}$

(NSC)<sup>6</sup>

(Canbrava)

$\mu\text{s/cm}$  ( )

(b a)

Benito) (PWC)<sup>8</sup> ( ) , SC / / % / )  
 . ) (et al, 2005 ( ) چشمگیر  
 ( (CGM)<sup>9</sup> pH  
 (pH> ) PWC pH  
 CGM NSC SC  
 چشمگیر  
 C/N (CEC)<sup>10</sup> % % یا %  
 = ( ) C/N (C)<sup>7</sup> SC NSC  
 ) C/N NSC SC NSC  
 (C) : ( )  
 (NSC) (SC) ( ) SC  
 / / % / %

NSC	SC	(C)		
/	/	/	1:2.5	pH
/	/	/	mmol/kg	Ca
/	/	/	mmol/kg	Mg
/	/	/	g/kg	K
/	/	mmol/kg	g/kg	P
/	/	/ mg/kg	g/kg	N
/	/	/	g/kg	C
/	/	/	g/kg	OM
/	/	/	mmol/kg	Al
/	/	-	mg/kg	Cu
/	/	-	mg/kg	Cr
/	/	-	mg/kg	Ni
/	/	-	mg/kg	Zn
/	/	-	mg/kg	Pb

NSC SC  
 / / / /  
 NSC SC  
 / / / /  
 SC (a+b a)  
 NSC  
 NSC SC C a+b a  
 NSC )  
 ( SC

CGM PWC

بی

( )

:( )

( )

( )

وسيله

(C/N )

pH

CGM					
/	/	/ /	/	1:5	pH
/	/	/ /	/	ds/m	EC
/	/	/ /	/	% dry wt	TN
/	/	/ /	/	% dry wt	TOC
/		/ /	/	-	C/N
/		/ /	/	mg/l	Ca
/	/	/ /	/	mg/l	Mg
/	/	/ /		mg/l	K
/	/	/ /	/	mg/l	Na
/	/	/ /	/	mg/l	Cl
/	/	- / /	/	mg/l	NO3
/	/	- / /	/	mg/l	P

( )

.( )

%

/ / pH ( % ) %

% %

% / / % %

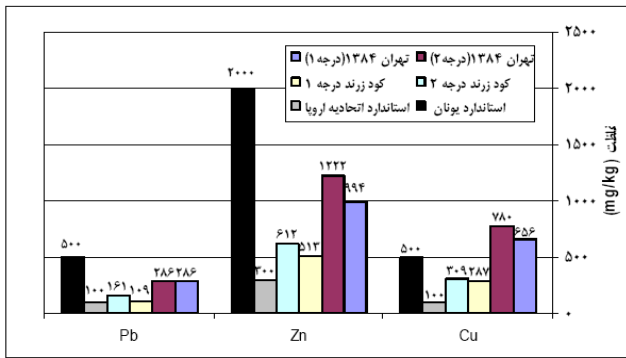
)

) (

پذير

.(





( ) :

Hawley, )

(1981)

(C/N)

( )

)

(

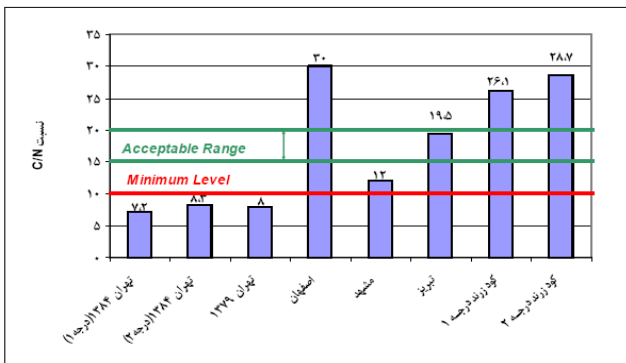
C/N

:

C/N

C/N

( )



( ) :

pb Zn Cu

نیستیم

( )

C/N

(

)

pH

pH

/ /  
( )



%

( / )

( ) ( )

« » NPK

( )

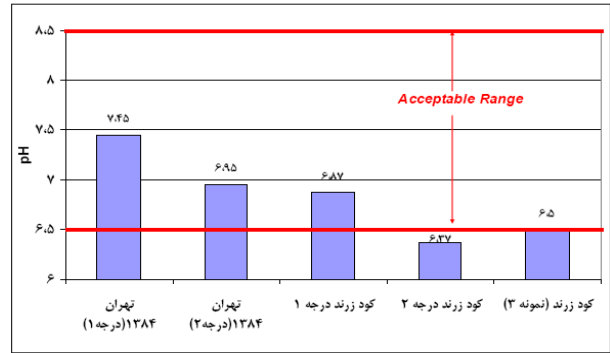
pH

pH

« » NPK نیستند.

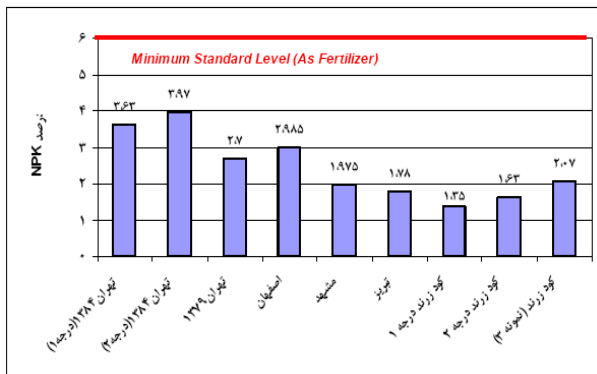
NPK

NPK



( )

pH



( )

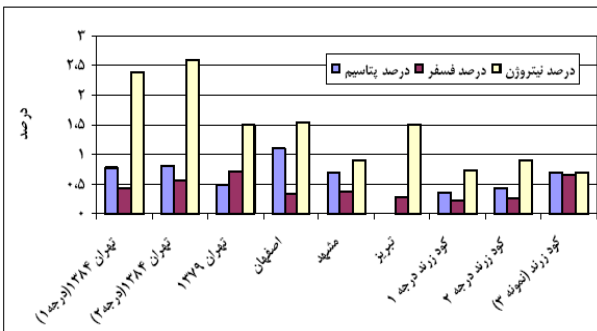
( )

µs/cm

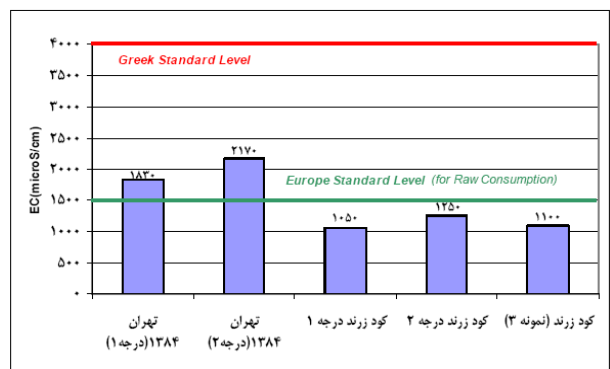
K P N

)

(



( )



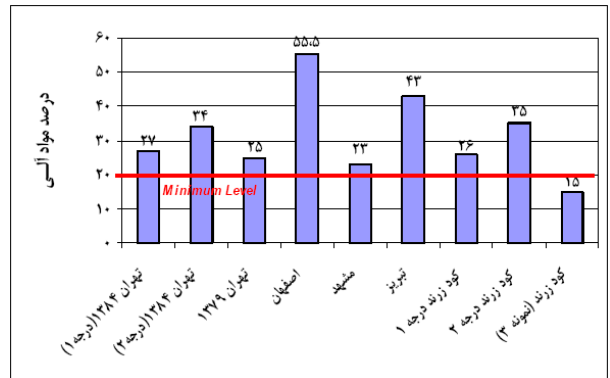
( )

بی

( )

C/N  
pH

زیر



پذیر

( ( NPK ) کند

(OM)

: ( )

)

یا

( %

pH

pH

pH

NPK

C/N

(بیشتر)

(

( )

بیشتر

نیستند.

کنیم؛

)

( pH

پذیر

	( )	C/N	C/N	C/N	بی
			پیش بینی	(	C/N
					C/N
1-Municipal Solid West					C/N
2-Nitrogen, Phosphorous, Potassium					C/N
3-Organic Mater	( )				C/N
4-Germination Index					C/N
5-Selected Compost					
6- Non Selected Compost					
7-Control Sample		یست			
8-Prune Waste Compost					بیشتر کنیم
9-Conventional Growth Media					
10-Cation Exchange Capacity					یان
			پیش	«	»
	(			)	

---

Diaz, L. F., et al .1993. Composting and Recycling Municipal Solid Waste, Lewis publishers.

Hawley, G. G.1981. The Condensed Chemical Dictionary 10<sup>th</sup> edition, van Nostrand Reinhold Company.

Lasaridi, K., et al .2005. Quality Assessment of Composts in the Greek Market: The Need for Standards and quality Assurance, Journal of Environmental Management (in press).

Lima, J. S., J. E. G.de Queiroz,and H. B. Freita, .2004. Effect of Selected and Non-Selected Urban Waste Compost on the Initial Growth of Corn, Resources Conservation & Recycling, vol. 42, pp 309-315.

Lund, H. F. 2001. The McGraw-Hill Recycling Handbook, 2nd Edition, Mc Graw Hill.

Veeken, A. H. M., et al .2005. Improving Quality of Composted Biowaste to Enhance Disease Suppersiveness of Compost – amended, peat-based potting mixes, Soil Biology & Biochemistry, vol. 37, pp 2131-2140.

World Bank .1974. Organic Fertilizers: Problem and Potential for Developing Countries, World Bank Fertilizer Study, Background paper No.4, IFC-Office of the Economics Advisor (15 pp).